

Human Machine Interface Console Range Modular | MPC

IP 66 | TYPE 4, 12, 13 | IK 10 (single door); IP 55 | TYPE 12, 13 | IK 10 (double door)



Material:

Body and door: 1.5 mm mild steel. Rear panel: 1.5 mm mild steel.
Bottom plates: 1.2 mm galvanized steel. Mounting plate: 2.5 mm galvanized steel.

Body:

Folded and seam welded. Console construction counts with a base that provides a distance between the floor and the lower part of the door/s acting as an integrated plinth.

Doors and panels:

Single folded surface mounted with hinges allowing left and right-hand opening to base door. Top section and desk panels held open by self engage/self release mechanical panel stays. Concealed hinges allowing 90° opening on the desk. Double door on 1200 and 1600 mm wide base units.

Mounting plate:

Standard mounting plate in base unit. Fixed by fixing brackets on C rail, top and bottom for depth adjustment. Optional in desk and top section units.

Lock:

Double-bit 3 mm locks for top section and desk unit. For base, two double-bit 3 mm locks. Other options available, see wall mounting section.

Cable access:

Bottom opening in base unit for cable access. Bottom plates for cable glanding supplied as standard.

Earthing:

M8 threaded studs on bodies, doors and rear panels.

Finish:

RAL 7035 structured powder coating.

Protection:

Single door: IP 66 | TYPE 4, 12, 13 | IK 10. Double door: IP 55 | TYPE 12, 13 | IK 10.

Delivery:

The base unit is provided with a mounting plate as standard. Desk and top section units have mounting plates provided as accessories. All top and base openings can be closed by choosing the appropriate accessory plate. Suitable nuts and washers for the various earthing studs are provided.



Dimensional table | MPC

IP 66 | TYPE 4, 12, 13 | IK 10 (single door); IP 55 | TYPE 12, 13 | IK 10 (double door)

Top section units | Mild steel

Enclosure dimensions				Item no.
H	W	D		
500	600	494		MPC061R5
500	800	494		MPC081R5
500	1000	494		MPC101R5
500	1200	494		MPC121R5
500	1600	494		MPC161R5

Desk units | Mild steel

Enclosure dimensions				Item no.
H	W	D		
250	600	985		MPC062R5
250	800	985		MPC082R5
250	1000	985		MPC102R5
250	1200	985		MPC122R5
250	1600	985		MPC162R5

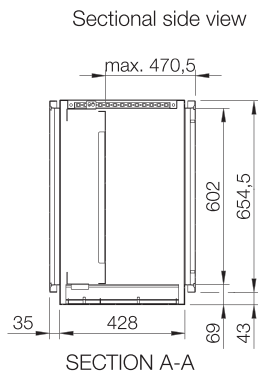
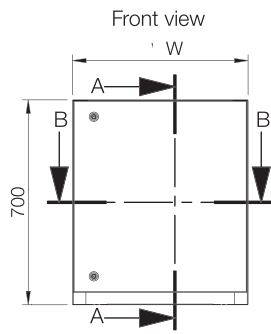
Base units with mounting plate | Mild steel

Enclosure dimensions			Mounting plate dimensions		Usable depth	Item no.
H	W	D	h	w	d	
700	600	500	590	499	470,5	MPC063R5
700	800	500	590	699	470,5	MPC083R5
700	1000	500	590	899	470,5	MPC103R5
700	1200	500	590	1099	470,5	MPC123R5
700	1600	500	590	1499	470,5	MPC163R5

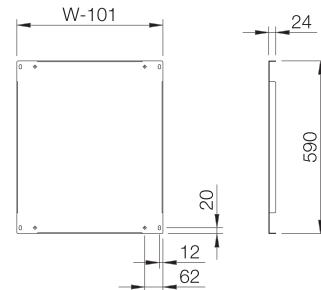
Note: Only 1200 mm and 1600 mm wide consoles have double door.

Base unit with mounting plate

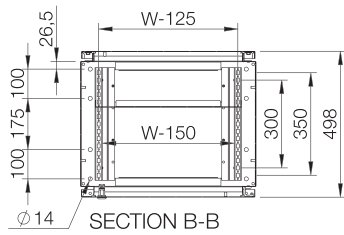
Single door



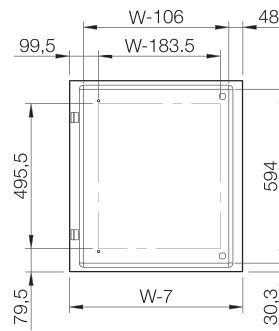
Mounting plate view



Sectional top view

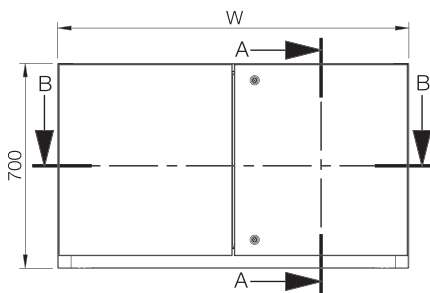


Inside door view

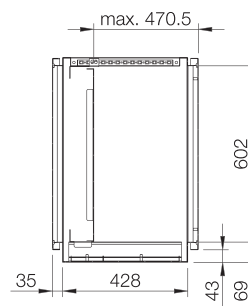


Double door

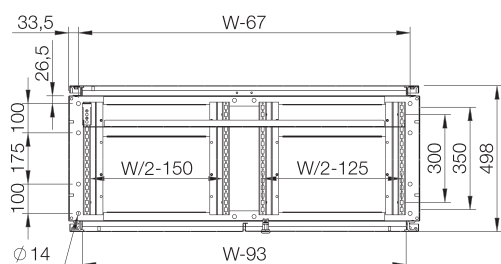
Front view



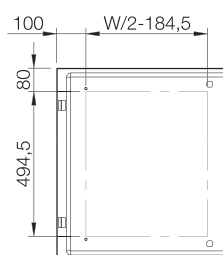
Sectional side view



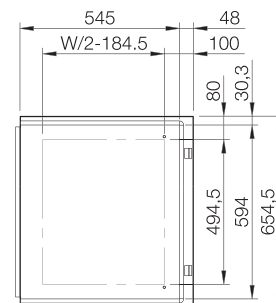
Sectional top view



Inside right door view



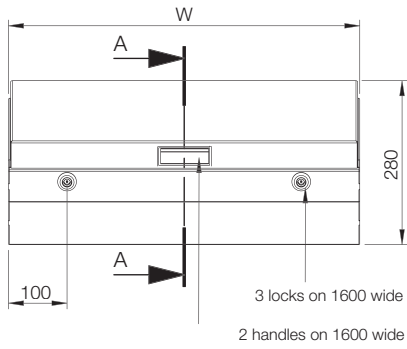
Inside left door view



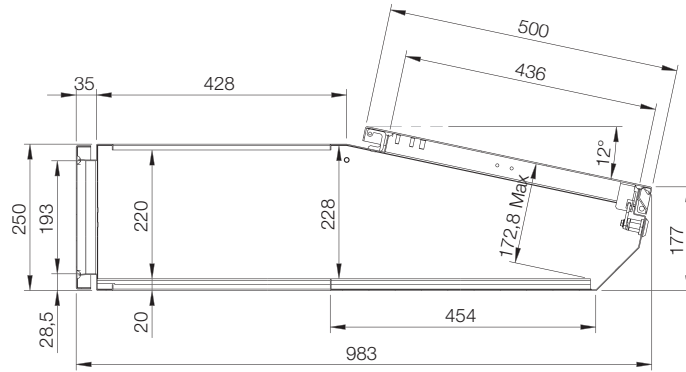
Dimensional drawing | MPC

Desk unit

Front view

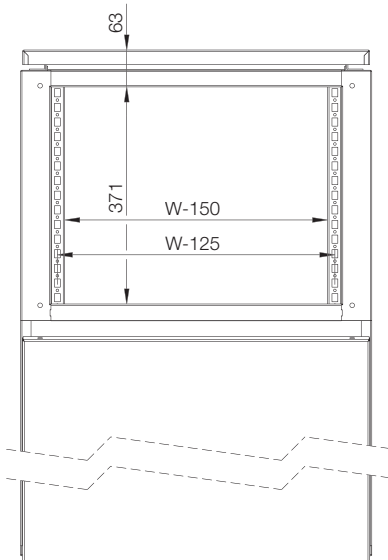


Sectional side view

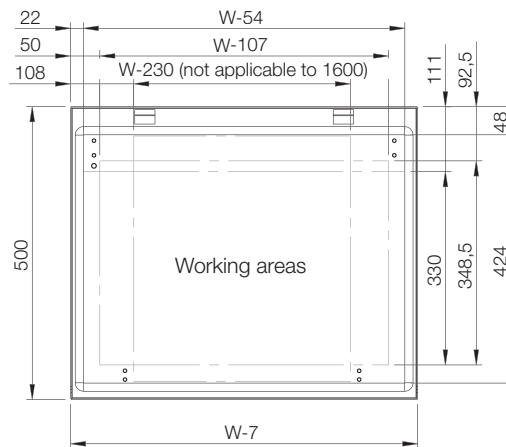


SECTION A-A

Top view

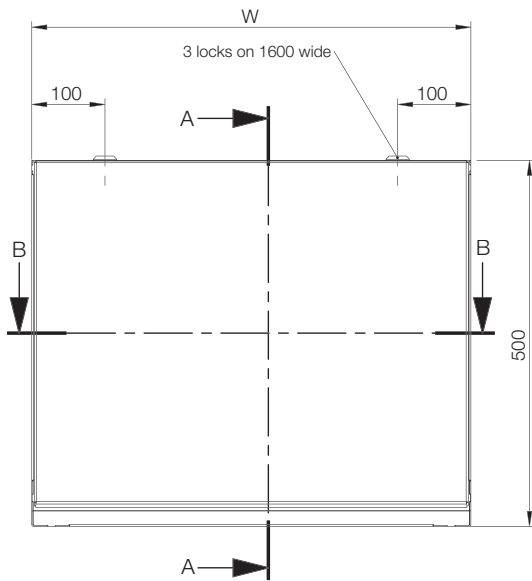


Inside panel view

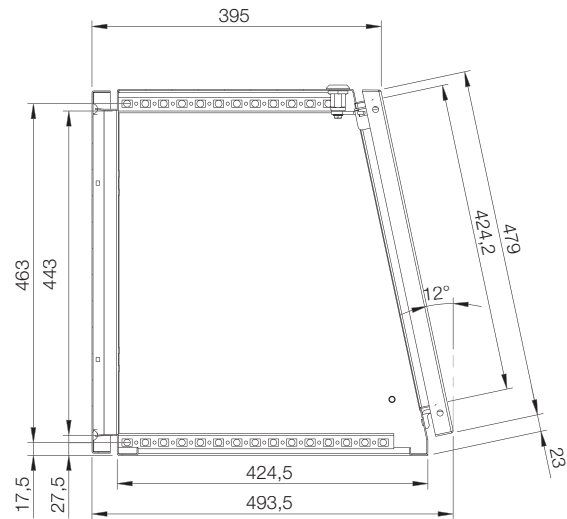


Top section units

Front view

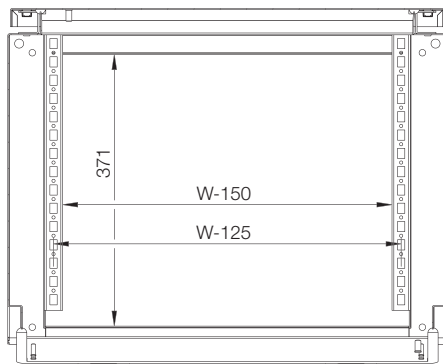


Sectional side view



SECTION A-A

Sectional top view



SECTION B-B

Inside panel view

