

# Terminal Boxes

## Polyester Range

### Polyester terminal box | MGRP

IP 66, 67



**Material:**

Glass fibre reinforced polyester.

**Gasket:**

Standard supply fitted with a polyurethane gasket. Silicone, neoprene and EPDM gaskets are available on request.

**Temperature resistance:**

-40°C to +100°C with the standard polyurethane gasket; -60°C to +130°C with the silicone gasket; -35°C to +100°C with the EPDM gasket; -30°C to +80°C with the neoprene gasket.

**Flammability:**

UL94 V-0.

**Protection:**

IP 66, 67.

**Finish:**

RAL 7000.

**Approvals:**

CE, GOST. For cULus approvals, please contact our sales department.

**Delivery:**

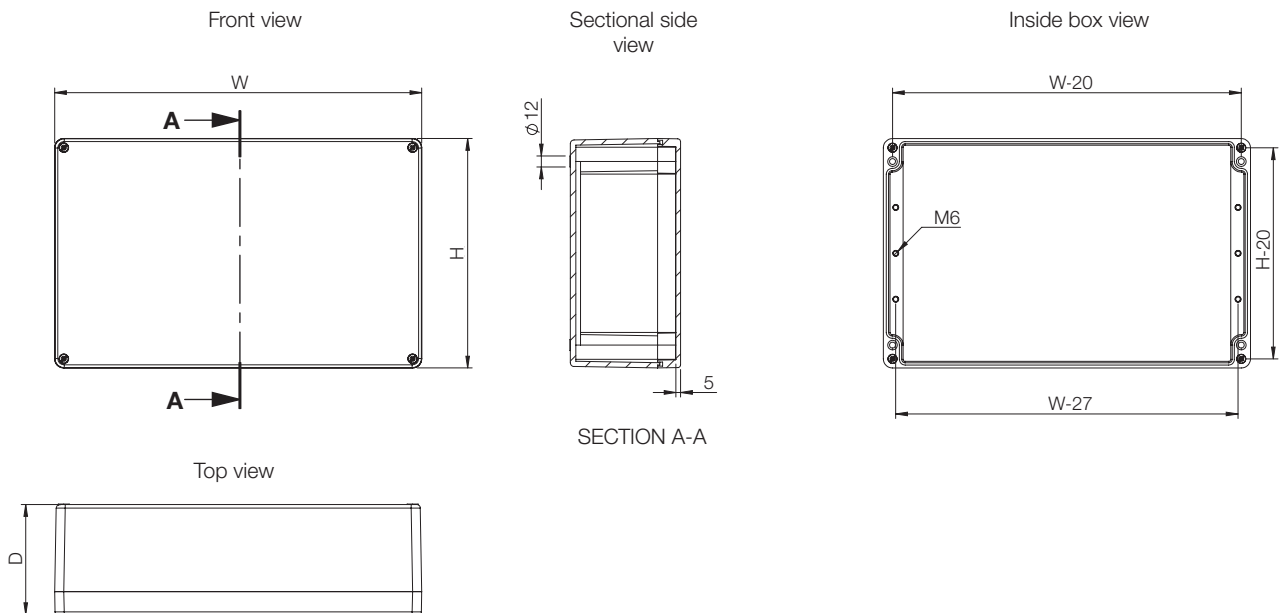
Body, cover and stainless steel cover screws.



IP 66, 67

| Box dimension |     |     | Item no.     |
|---------------|-----|-----|--------------|
| H             | W   | D   |              |
| 75            | 80  | 55  | MGRP080806GE |
| 75            | 80  | 75  | MGRP080808GE |
| 75            | 110 | 55  | MGRP081106GE |
| 75            | 110 | 75  | MGRP081108GE |
| 75            | 160 | 55  | MGRP081606GE |
| 75            | 160 | 75  | MGRP081608GE |
| 75            | 190 | 55  | MGRP081906GE |
| 75            | 190 | 75  | MGRP081908GE |
| 120           | 122 | 90  | MGRP121209GE |
| 120           | 220 | 90  | MGRP122209GE |
| 160           | 160 | 90  | MGRP161609GE |
| 160           | 260 | 90  | MGRP162609GE |
| 160           | 360 | 90  | MGRP163609GE |
| 160           | 560 | 90  | MGRP165609GE |
| 250           | 255 | 120 | MGRP252612GE |
| 250           | 400 | 120 | MGRP254012GE |
| 405           | 400 | 120 | MGRP414012GE |

Dimensional drawing | MGRP



# Terminal Boxes

## Polyester Range

### Accessories

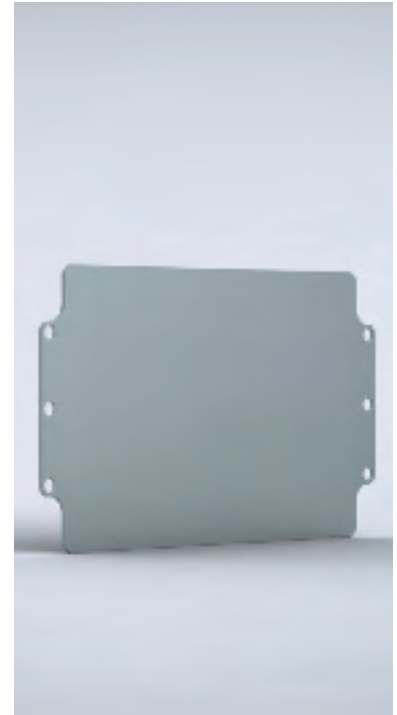
## MGRP Mounting plate, GMP

**Description:** Mounting plate for MGRP boxes.

**Material:** 1.5 mm galvanized steel, 2.5 mm for GMP1656E.

**Pack quantity:** 1 piece.

| For box |     | Mounting plate dimensions |     | Item no. |
|---------|-----|---------------------------|-----|----------|
| H       | W   | h                         | w   |          |
| 75      | 80  | 64                        | 69  | GMP0808E |
| 75      | 110 | 64                        | 99  | GMP0811E |
| 75      | 160 | 64                        | 149 | GMP0816E |
| 75      | 190 | 64                        | 179 | GMP0819E |
| 120     | 122 | 107                       | 108 | GMP1212E |
| 120     | 220 | 107                       | 206 | GMP1222E |
| 160     | 160 | 144                       | 144 | GMP1616E |
| 160     | 260 | 144                       | 244 | GMP1626E |
| 160     | 360 | 144                       | 344 | GMP1636E |
| 160     | 560 | 144                       | 543 | GMP1656E |
| 250     | 255 | 233                       | 238 | GMP2526E |
| 250     | 400 | 233                       | 383 | GMP2540E |
| 405     | 400 | 388                       | 383 | GMP4140E |



## Hinges, HHI

**Description:** Using this accessory the cover can be hinged. 150° opening. Machining is required.

**Material:** Polyester.

**For box:** HHI03: MGRP121209GE to MGRP414012GE.

**Pack quantity:** Set of 3 hinges. Mounting accessories are included.

| Item no. |
|----------|
| HHI03    |

