

Terminal Boxes

Polycarbonate Range

Large polycarbonate terminal box | OPCP

IP 66, 67 | IK 08



Description:

Polycarbonate box, halogen-free, suitable for outdoor use. High UV radiation resistance.

Material:

Polycarbonate.

Gasket:

Polyurethane gasket integrated in the box cover.

Temperature resistance:

-40°C to +80°C.

Flammability:

UL746C 5V.

Protection:

IP 66, 67 | IK 08 (-25°C...+35°C).

Finish:

RAL 7035.

Approvals:

CE and GOST. For cULus approvals, please contact our sales department.

Delivery:

Body, cover, cover screws made of polyamide and mounting screws.



IP 66, 67 | IK 08

With grey cover

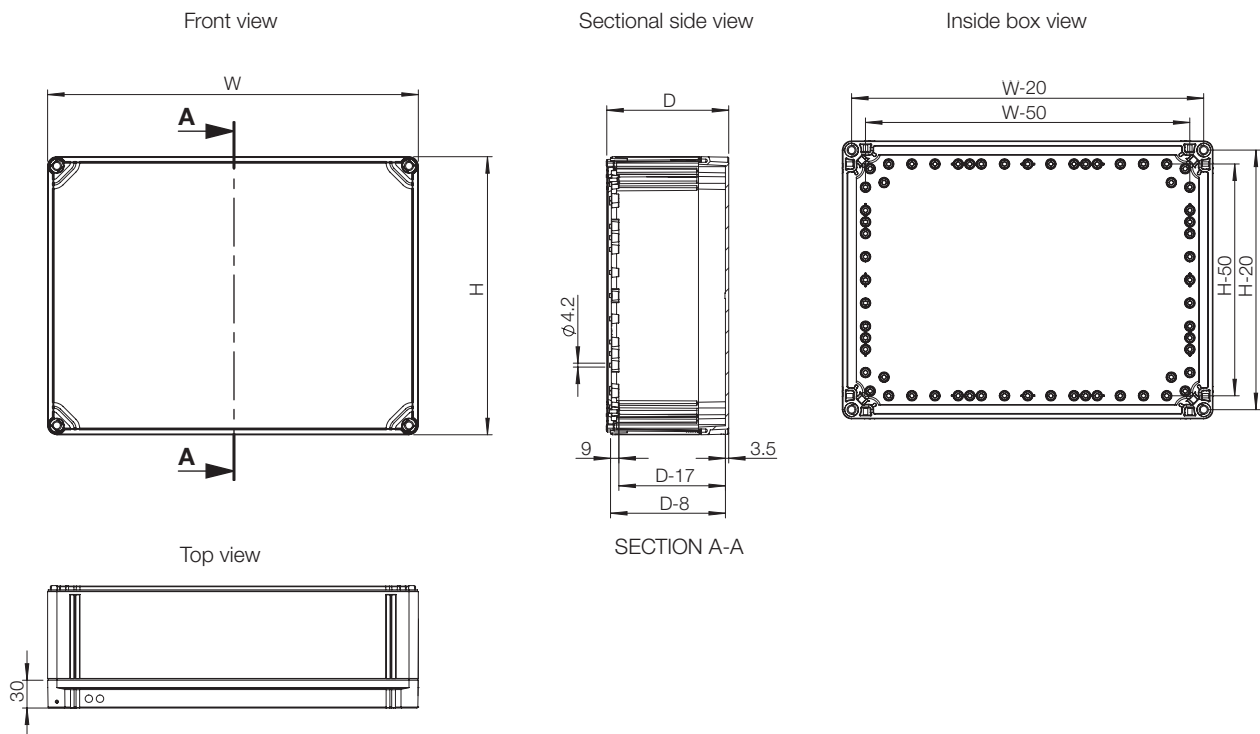
Box dimension			Inner depth (mm)	Item no.
H	W	D		
200	200	132	115	OPCP202013GE
200	300	132	115	OPCP203013GE
200	400	132	115	OPCP204013GE
300	300	132	115	OPCP303013GE
300	400	132	115	OPCP304013GE
300	600	132	115	OPCP306013GE
400	600	132	115	OPCP406013GE

With transparent cover

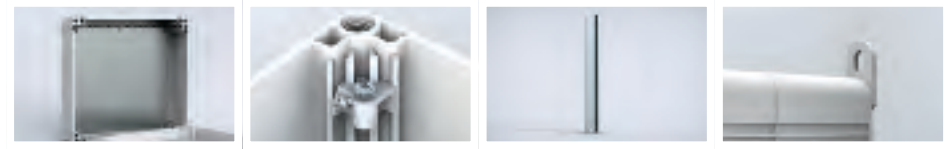
Box dimension			Inner depth (mm)	Item no.
H	W	D		
200	200	132	115	OPCP202013TE
200	300	132	115	OPCP203013TE
200	400	132	115	OPCP204013TE
300	300	132	115	OPCP303013TE
300	400	132	115	OPCP304013TE
300	600	132	115	OPCP306013TE
400	600	132	115	OPCP406013TE



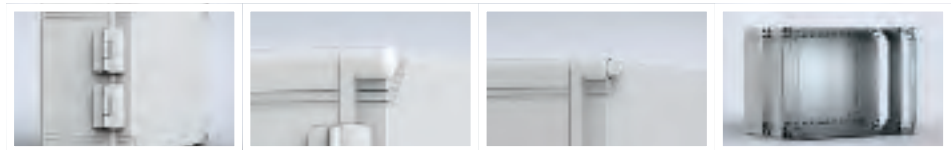
Dimensional drawing | OPCP



Accessories selection matrix I OPCP



Box				Mounting			Fixing
	H	W	D	Mounting plate	Mounting plate depth adjustment kit	DIN rail	Wall mounting brackets
OPCP202013GE	200	200	132	OMP2020E	OELA1.04E	DR351505E	OFL1E
OPCP203013GE	200	300	132	OMP2030E	OELA1.04E	DR351505E/DR352505E	OFL1E
OPCP204013GE	200	400	132	OMP2040E	OELA1.04E	DR351505E/DR353505E	OFL1E
OPCP303013GE	300	300	132	OMP3030E	OELA1.04E	DR352505E	OFL1E
OPCP304013GE	300	400	132	OMP3040E	OELA1.04E	DR352505E/DR353505E	OFL1E
OPCP306013GE	300	600	132	OMP3060E	OELA1.04E	DR352505E	OFL1E
OPCP406013GE	400	600	132	OMP4060E	OELA1.04E	DR353505E	OFL1E



Box	H	W	D	Cover			Baying
				Hinges	Cover plugs	Wing screw	Extension frame
OPCP202013GE	200	200	132	OHI1E	OCP1E	OLW55E	OPCP202006EE
OPCP203013GE	200	300	132	OHI1E	OCP1E	OLW55E	OPCP203006EE
OPCP204013GE	200	400	132	OHI1E	OCP1E	OLW55E	OPCP204006EE
OPCP303013GE	300	300	132	OHI1E	OCP1E	OLW55E	OPCP303006EE
OPCP304013GE	300	400	132	OHI1E	OCP1E	OLW55E	OPCP304006EE
OPCP306013GE	300	600	132	OHI1E	OCP1E	OLW55E	OPCP306006EE
OPCP406013GE	400	600	132	OHI1E	OCP1E	OLW55E	OPCP406006EE

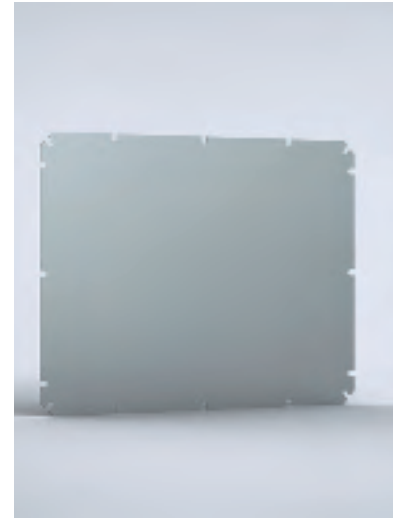
On request- Box with transparent cover- the transparent cover is made of polycarbonate, the item number is OPCPxxxxxTE.

Terminal Boxes Polycarbonate Range Accessories

Mounting plate, OMP

Description: Steel mounting plate for OABP/OPCP boxes.
Material: 1.5 mm galvanized steel.
Pack quantity: 1 piece.

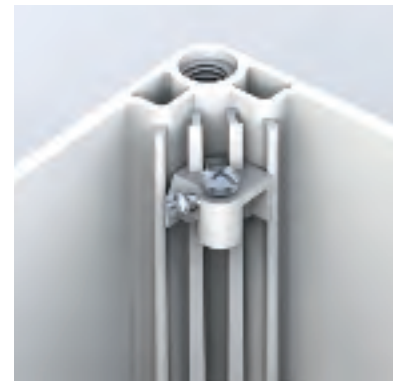
For box		Mounting plate dimensions		Item no.
H	W	h	w	
200	200	160	160	OMP2020E
200	300	160	260	OMP2030E
200	400	160	360	OMP2040E
300	300	260	260	OMP3030E
300	400	260	360	OMP3040E
300	600	260	560	OMP3060E
400	600	360	560	OMP4060E



Mounting plate depth adjustment kit, OEL

Description: Allows adjusting the mounting plate at any depth. .
Pack quantity: OEL1E: 1 piece, and OELA1.04E: 4 pieces.

Item no.
OELA1.04E
OEL1E



DIN rail, DR3

Description: DIN rail 35 mm for OABP/OPCP boxes.
Material: Galvanized steel.
Pack quantity: 1 piece.

For box	Item no.
H/W	
200	DR351505E
300	DR352505E
400	DR353505E



Terminal Boxes

Polycarbonate Range

Accessories

Wall mounting brackets, OFL

- Description:** Mounting brackets for wall fixing. Can be mounted in three different directions and will support approximately a load of 600 N.
- Material:** Polyamide.
- Finish:** RAL 7035.
- Pack quantity:** 4 brackets with mounting accessories.

Item no.
OFL1E



Hinges, OHI

- Description:** Using this accessory the cover can be hinged. Machining is required.
- Material:** Polycarbonate.
- Finish:** RAL 7035.
- Pack quantity:** Set of 2 hinges with mounting accessories.

Item no.
OHI1E



Cover plugs, OCP

- Description:** Cover plugs can be used in place of the cover screws located next to the hinge, if hinges are fitted.
- Material:** Polyethylene.
- Pack quantity:** 12 pieces.

Item no.
OCP1E



Wing screw, OLW

- Description:** Wing screws can be used in place of each terminal box cover screw, which will allow easier access. If hinges are fitted to the terminal box, only two wing screws will be required and must be fitted opposite the hinge.
- Pack quantity:** 24 pieces.

Item no.
OLW55E



Polycarbonate extension frame, OPCP-EE

Description: Depth extension frame to be used when you need more depth than the standard. Can be used in combination with the OPCP range and with the OABP as well.

Material: Polycarbonate.

Pack quantity: 1 piece.

For box			
H	W	D	Item no.
200	200	55	OPCP202006EE
200	300	55	OPCP203006EE
200	400	55	OPCP204006EE
300	300	55	OPCP303006EE
300	400	55	OPCP304006EE
300	600	55	OPCP306006EE
400	600	55 </td <td>OPCP406006EE</td>	OPCP406006EE

