

# Terminal Boxes

## ABS Range

### Large ABS terminal box | OABP

IP 66, 67 | IK 06/07



**Description:**

ABS box, halogen-free, suitable for indoor use. Low UV radiation resistance.

**Material:**

ABS.

**Gasket:**

Polyurethane gasket integrated in the box cover.

**Temperature resistance:**

-40°C to +60°C.

**Flammability:**

UL94 HB.

**Protection:**

IP 66, 67 | IK 06 (-25°C) | IK 07 (+35°C).

**Finish:**

RAL 7035.

**Approvals:**

CE and GOST.

**Delivery:**

Body, cover, cover screws made of polyamide and mounting screws.



## IP 66, 67 | IK 06/07

With grey cover

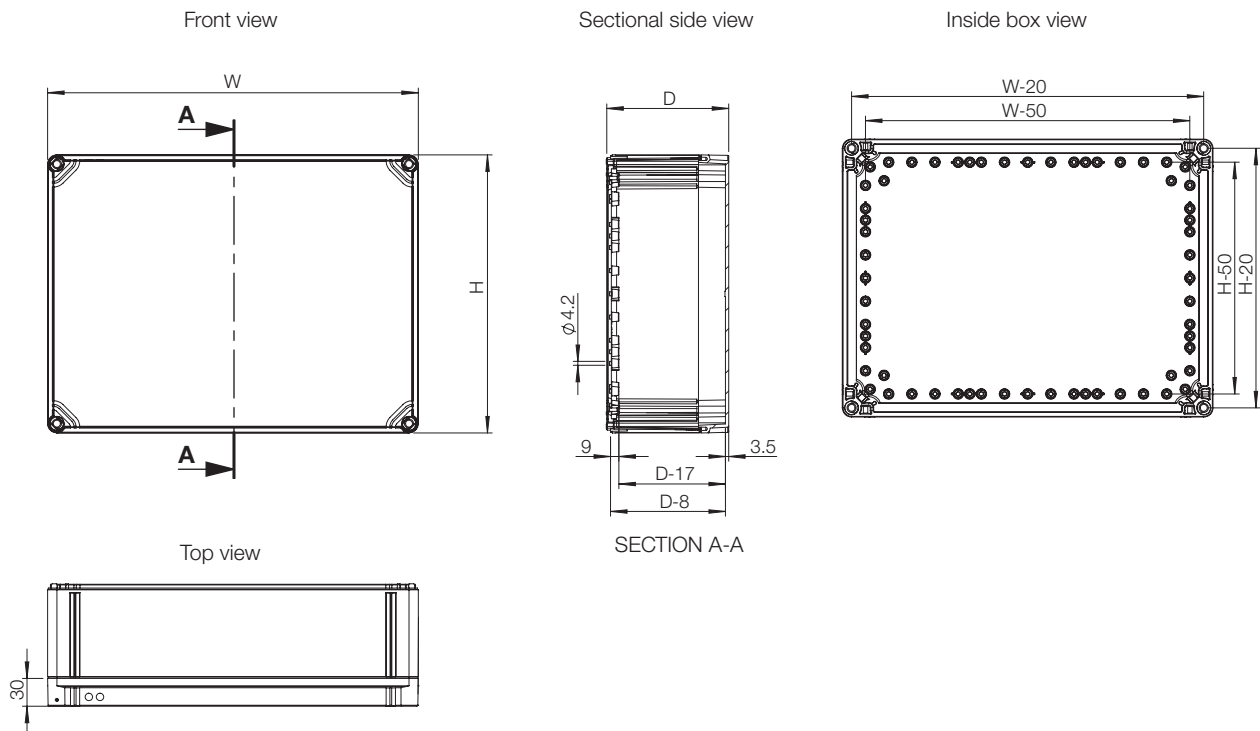
Box dimension			Inner depth (mm)	Item no.
H	W	D		
200	200	132	115	OABP202013GE
200	300	132	115	OABP203013GE
200	400	132	115	OABP204013GE
300	300	132	115	OABP303013GE
300	400	132	115	OABP304013GE
300	600	132	115	OABP306013GE
400	600	132	115	OABP406013GE

With transparent cover

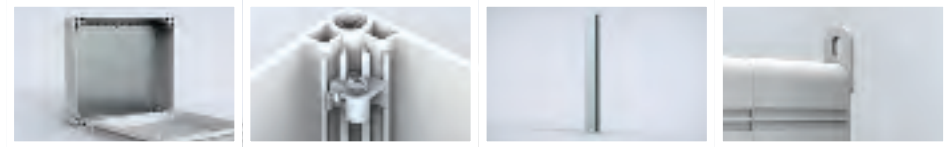
Box dimension			Inner depth (mm)	Item no.
H	W	D		
200	200	132	115	OABP202013TE
200	300	132	115	OABP203013TE
200	400	132	115	OABP204013TE
300	300	132	115	OABP303013TE
300	400	132	115	OABP304013TE
300	600	132	115	OABP306013TE
400	600	132	115	OABP406013TE



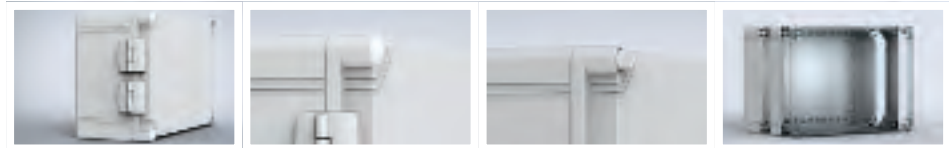
## Dimensional drawing | OABP



# Accessories selection matrix I OABP



Box				Mounting			Fixing
	H	W	D	Mounting plate	Mounting plate depth adjustment kit	DIN rail	Wall mounting brackets
OABP202013GE	200	200	132	OMP2020E	OELA1.04E	DR351505E	OFL1E
OABP203013GE	200	300	132	OMP2030E	OELA1.04E	DR351505E/DR352505E	OFL1E
OABP204013GE	200	400	132	OMP2040E	OELA1.04E	DR351505E/DR353505E	OFL1E
OABP303013GE	300	300	132	OMP3030E	OELA1.04E	DR352505E	OFL1E
OABP304013GE	300	400	132	OMP3040E	OELA1.04E	DR352505E/DR353505E	OFL1E
OABP306013GE	300	600	132	OMP3060E	OELA1.04E	DR352505E	OFL1E
OABP406013GE	400	600	132	OMP4060E	OELA1.04E	DR353505E	OFL1E
OABP202013TE	200	200	132	OMP2020E	OELA1.04E	DR351505E	OFL1E
OABP203013TE	200	300	132	OMP2030E	OELA1.04E	DR351505E/DR352505E	OFL1E
OABP204013TE	200	400	132	OMP2040E	OELA1.04E	DR351505E/DR353505E	OFL1E
OABP303013TE	300	300	132	OMP3030E	OELA1.04E	DR352505E	OFL1E
OABP304013TE	300	400	132	OMP3040E	OELA1.04E	DR352505E/DR353505E	OFL1E
OABP306013TE	300	600	132	OMP3060E	OELA1.04E	DR352505E	OFL1E
OABP406013TE	400	600	132	OMP4060E	OELA1.04E	DR353505E	OFL1E



Box				Cover			Baying
	H	W	D	Hinges	Cover plugs	Wing screw	Extension frame
OABP202013GE	200	200	132	OHI1E	OCP1E	OLW55E	OPCP202006EE
OABP203013GE	200	300	132	OHI1E	OCP1E	OLW55E	OPCP203006EE
OABP204013GE	200	400	132	OHI1E	OCP1E	OLW55E	OPCP204006EE
OABP303013GE	300	300	132	OHI1E	OCP1E	OLW55E	OPCP303006EE
OABP304013GE	300	400	132	OHI1E	OCP1E	OLW55E	OPCP304006EE
OABP306013GE	300	600	132	OHI1E	OCP1E	OLW55E	OPCP306006EE
OABP406013GE	400	600	132	OHI1E	OCP1E	OLW55E	OPCP406006EE
OABP202013TE	200	200	132	OHI1E	OCP1E	OLW55E	OPCP202006EE
OABP203013TE	200	300	132	OHI1E	OCP1E	OLW55E	OPCP203006EE
OABP204013TE	200	400	132	OHI1E	OCP1E	OLW55E	OPCP204006EE
OABP303013TE	300	300	132	OHI1E	OCP1E	OLW55E	OPCP303006EE
OABP304013TE	300	400	132	OHI1E	OCP1E	OLW55E	OPCP304006EE
OABP306013TE	300	600	132	OHI1E	OCP1E	OLW55E	OPCP306006EE
OABP406013TE	400	600	132	OHI1E	OCP1E	OLW55E	OPCP406006EE

## Terminal Boxes ABS Range Accessories

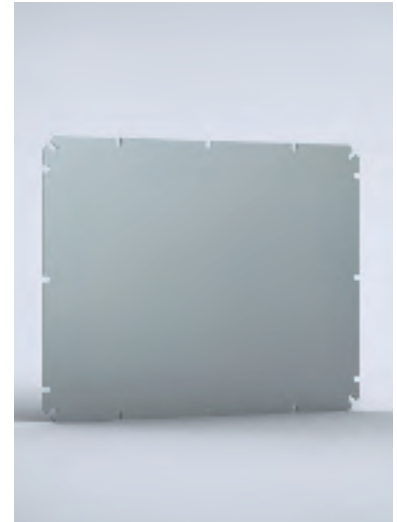
### Mounting plate, OMP

**Description:** Steel mounting plate for OABP/OPCP boxes.

**Material:** 1.5 mm galvanized steel.

**Pack quantity:** 1 piece.

For box		Mounting plate dimensions		Item no.
H	W	h	w	
200	200	160	160	OMP2020E
200	300	160	260	OMP2030E
200	400	160	360	OMP2040E
300	300	260	260	OMP3030E
300	400	260	360	OMP3040E
300	600	260	560	OMP3060E
400	600	360	560	OMP4060E



### Mounting plate depth adjustment kit, OEL

**Description:** Allows adjusting the mounting plate at any depth.

**Pack quantity:** OEL1E: 1 piece, and OELA1.04E: 4 pieces.

Item no.
OELA1.04E
OEL1E



### DIN rail, DR3

**Description:** DIN rail 35 mm for OABP/OPCP boxes.

**Material:** Galvanized steel.

**Pack quantity:** 1 piece.

For box	Item no.
H/W	
200	DR351505E
300	DR352505E
400	DR353505E



# Terminal Boxes

## ABS Range

### Accessories

#### Wall mounting brackets, OFL

- Description:** Mounting brackets for wall fixing. Can be mounted in three different directions and will support approximately a load of 600 N.
- Material:** Polyamide.
- Finish:** RAL 7035.
- Pack quantity:** 4 brackets with mounting accessories.

Item no.
OFL1E



#### Hinges, OHI

- Description:** Using this accessory the cover can be hinged. Machining is required.
- Material:** Polycarbonate.
- Finish:** RAL 7035.
- Pack quantity:** Set of 2 hinges with mounting accessories.

Item no.
OHI1E



#### Cover plugs, OCP

- Description:** Cover plugs can be used in place of the cover screws located next to the hinge, if hinges are fitted.
- Material:** Polyethylene.
- Pack quantity:** 12 pieces.

Item no.
OCP1E



#### Wing screw, OLW

- Description:** Wing screws can be used in place of each terminal box cover screw, which will allow easier access. If hinges are fitted to the terminal box, only two wing screws will be required and must be fitted opposite the hinge.
- Pack quantity:** 24 pieces.

Item no.
OLW55E

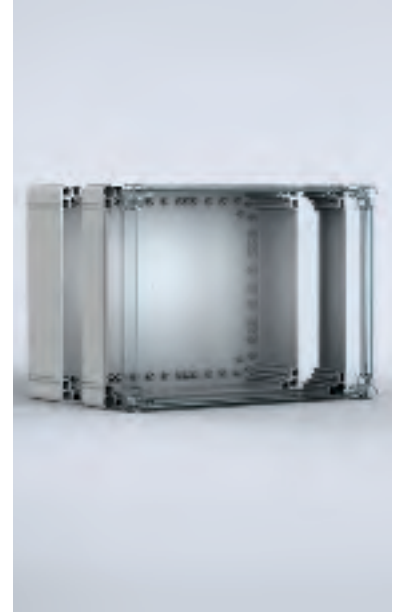


## Polycarbonate extension frame, OPCP-EE

**Description:** Depth extension frame to be used when you need more depth than the standard. Can be used in combination with the OPCP range and with the OABP as well.

**Material:** Polycarbonate.

**Pack quantity:** 1 piece.



For box			
H	W	D	Item no.
200	200	55	OPCP202006EE
200	300	55	OPCP203006EE
200	400	55	OPCP204006EE
300	300	55	OPCP303006EE
300	400	55	OPCP304006EE
300	600	55	OPCP306006EE
400	600	55	OPCP406006EE

